



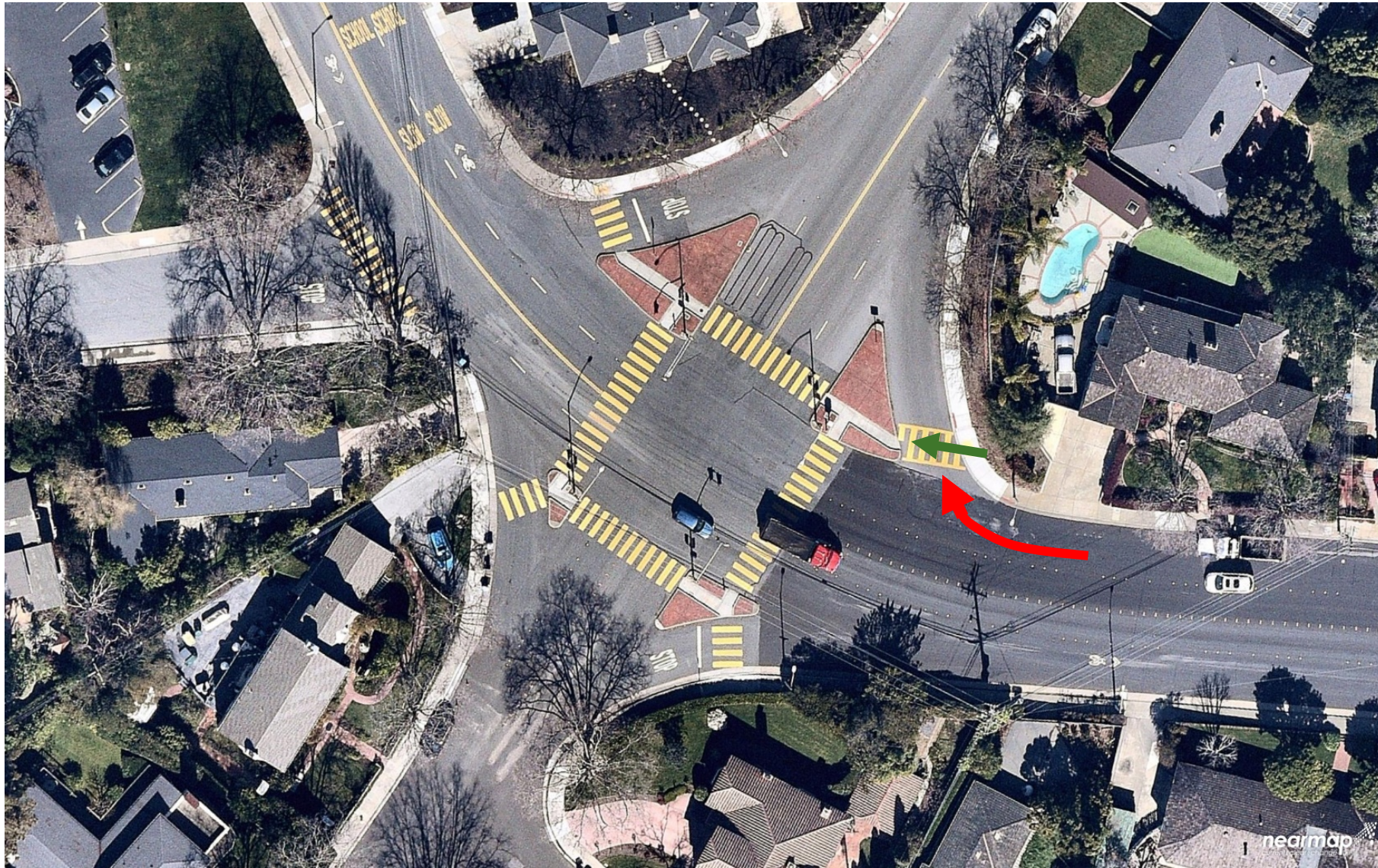
# Alameda de las Pulgas / Parrott Drive Pedestrian Improvement Pilot Project



Table 2 - Baywood Top Ten Traffic Concerns

Neighborhood Priority	Site/Location	Interests and Reasons
1	Parrott	Speeding
2	W. 3rd/Parrot Crosswalk	Jaywalking, major concern
3	3rd Ave	Speeding
4	Alameda/Georgetown	Parking issues with cars parking in red zone during child drop-off/pick-up, no police enforcement, blocking fire hydrant, safety concerns
5	Alameda (Virginia and Nevada, Georgetown)	Speeding, school safety
6	Aragon HS	Speeding during school dismissal at Aragon, safety enforcement, increased traffic due to Waze & other apps
7	Edinburgh (Virginia to Notre Dame)	Speeding
8	Baywood Neighborhood	Vehicles not yielding at stop signs, running lights throughout Baywood, safety for pedestrians, limited sidewalks in area
9	St. Matthew's Catholic Parish and School	Illegal parking, double parking, traffic backup
10	Blind corner/turn & pedestrian walk-way at Northbound Alameda at Parrot	The hedge on the property limits visibility for cars turning right onto Parrot Drive from Alameda. Pedestrians trying to cross at the crosswalk are in danger as motorists and pedestrians often can't see each other in enough time. This corner also experiences the common problems of speeding and erratic driving behaviors. Also, residents at the top of the street experience trouble backing out of their driveways.



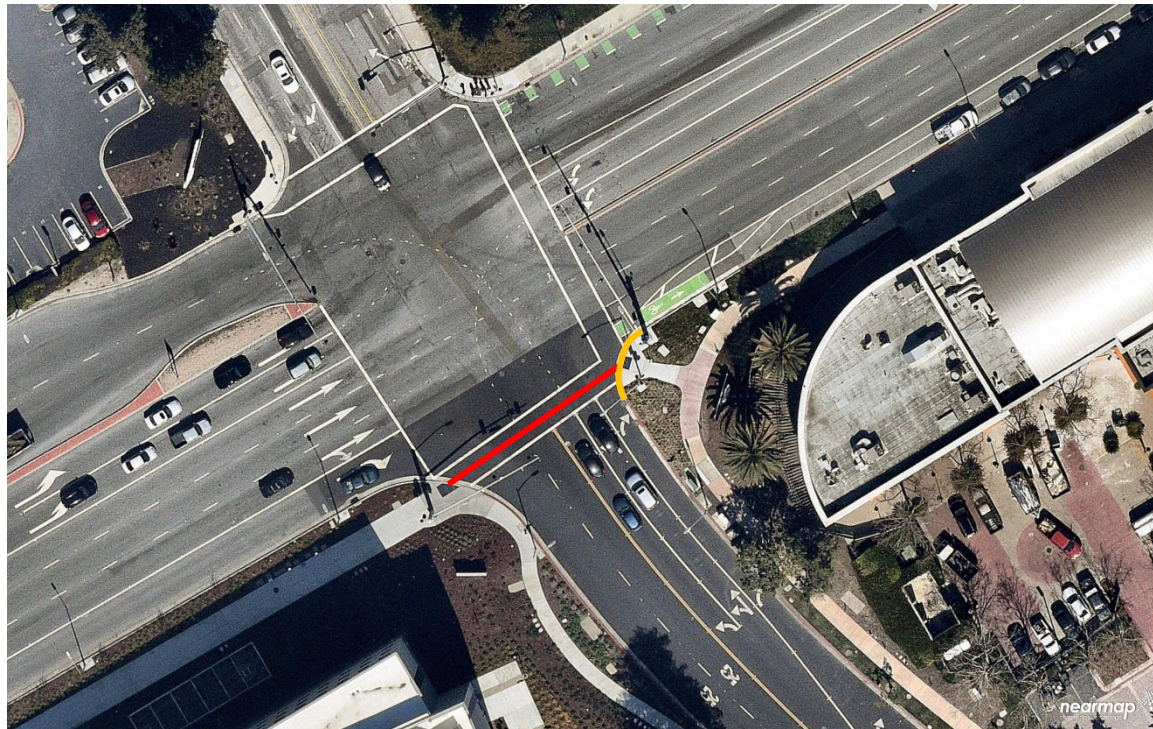


Parrott Drive and Alameda de las Pulgas, San Mateo, CA





Before



After

Technology Dr and Skyport Dr, San Jose, CA

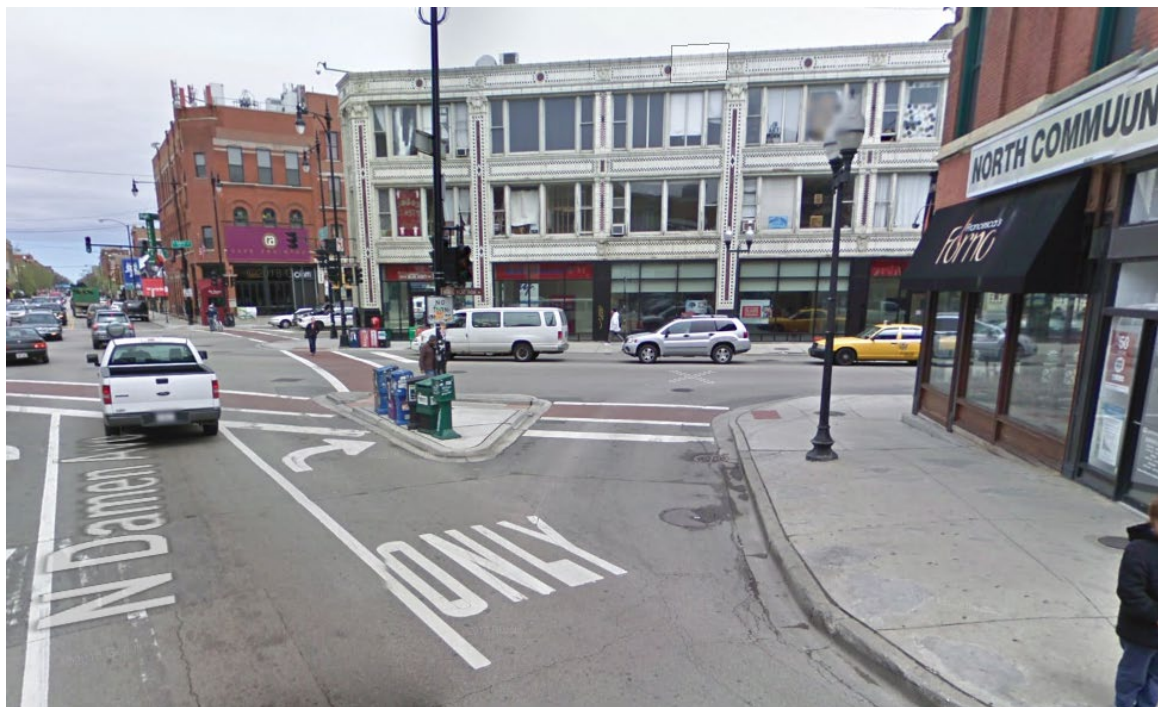




Before



After



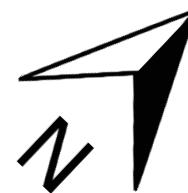
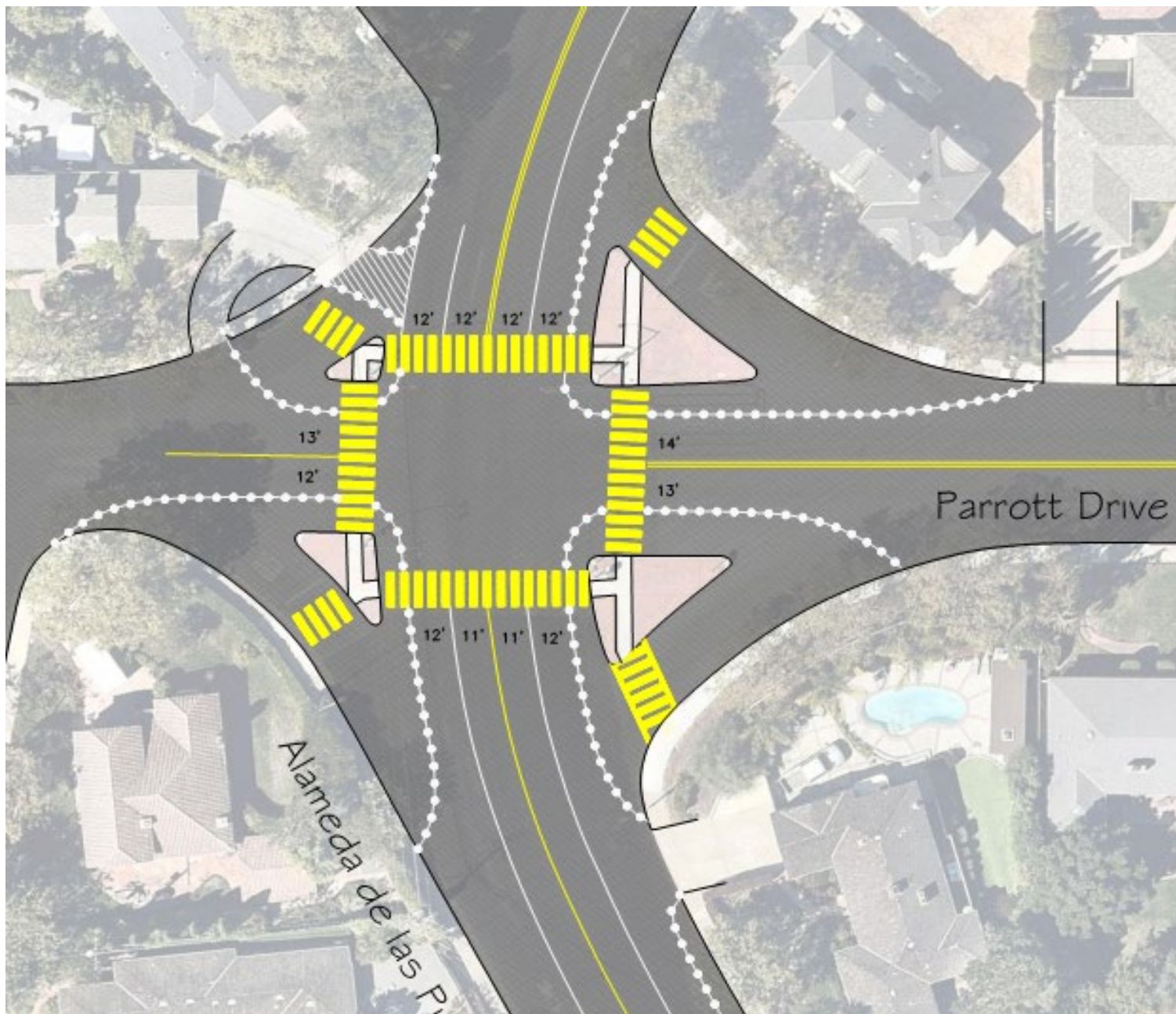
Before



After

# Pilot Proposal





Pilot Project Conceptual Schematic





Edinburgh St and Barneson Ave, San Mateo, CA





Seattle, WA



Austin, TX



Chicago, IL



Memphis, TN



# Pilot Project Details

- How much will this cost?
  - Anticipated to be less than \$20,000
- How long will this last?
  - Pilot will have a 6-month duration and then will be re-evaluated
- How long does construction take?
  - Less than a week
- Will this effect vehicle operations?
  - Software analysis and simulation shows negligible changes
- When and how will the final project be implemented?
  - After pilot project and positive community feedback, the full streetscape design (curb, gutter, sidewalk, etc) would be added as a project in CIP budget for funding. The project will move on to design and construction after funding approval.